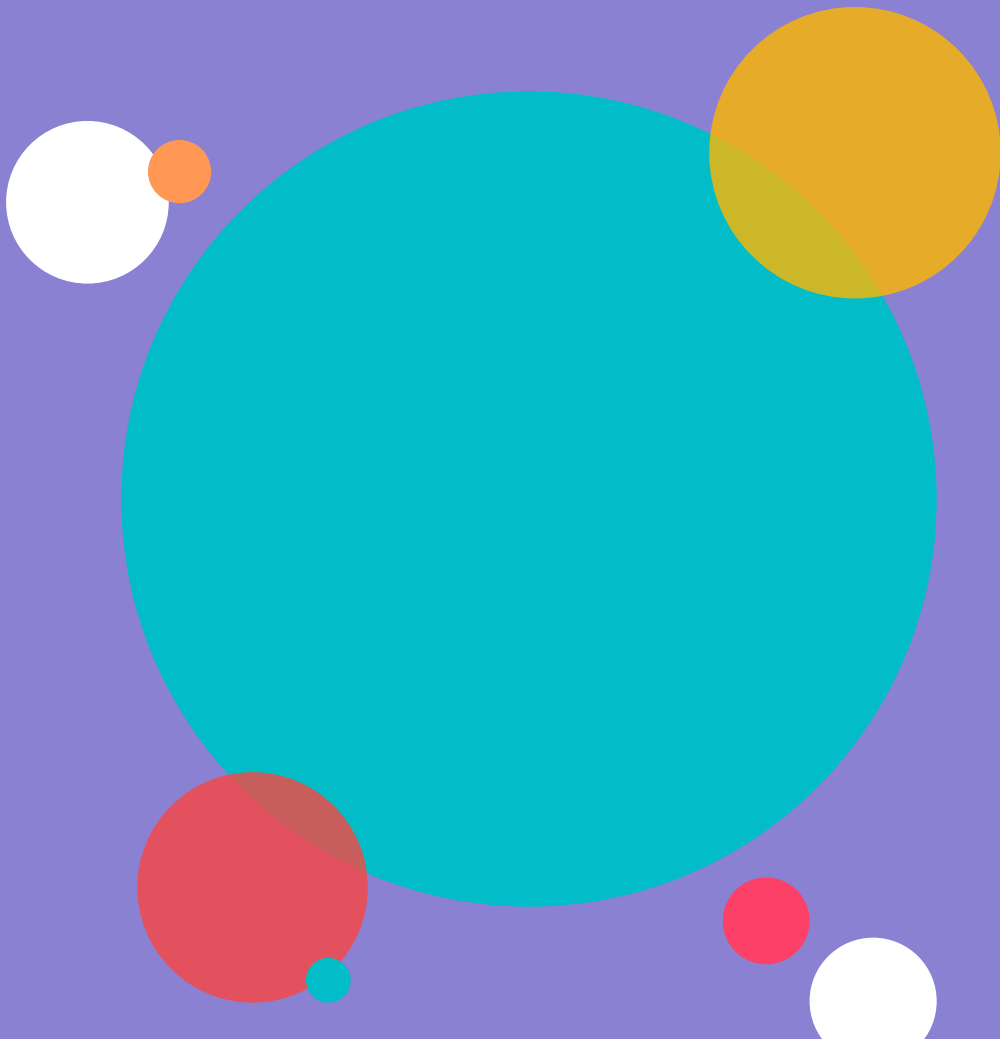


|









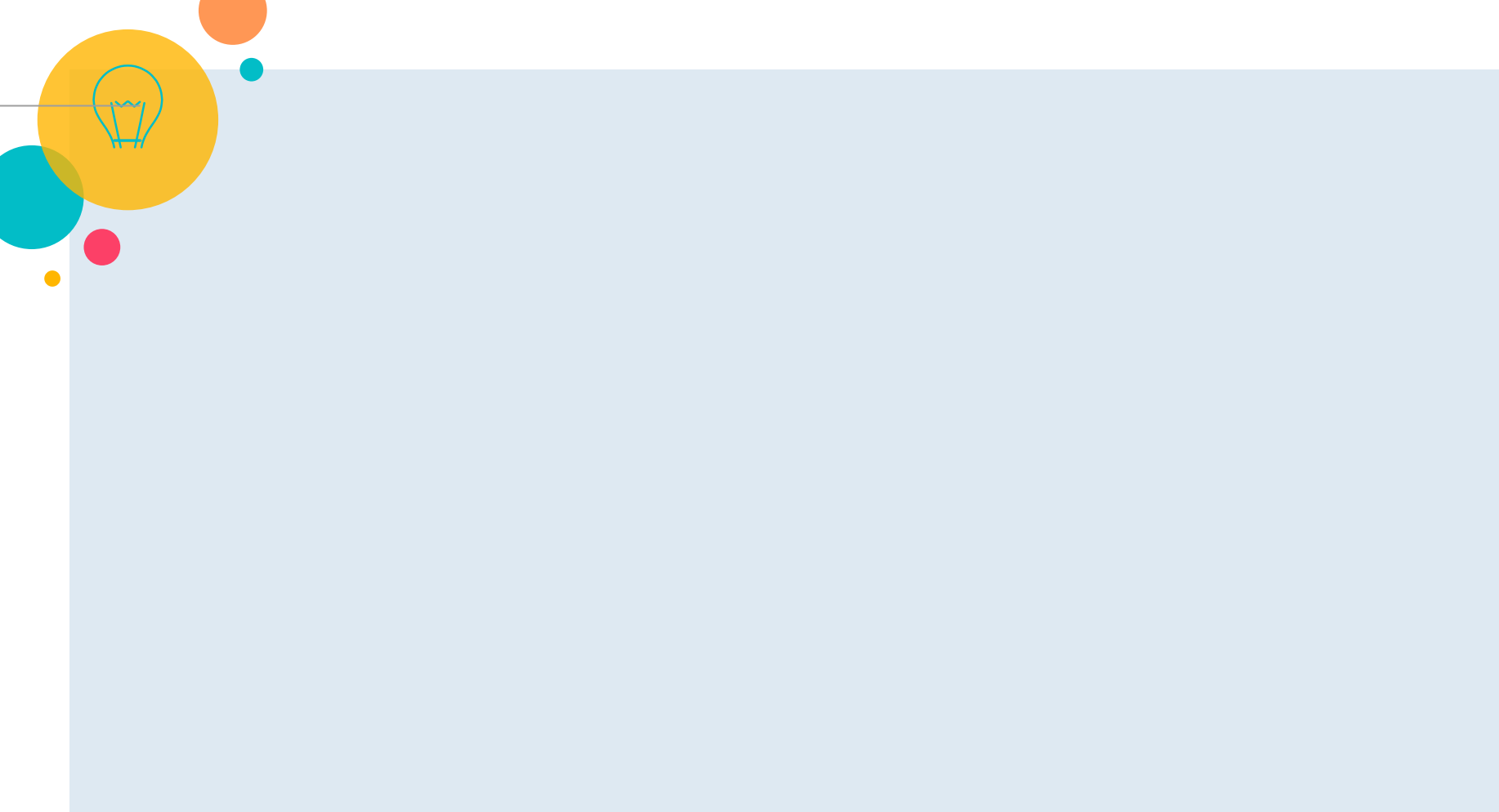


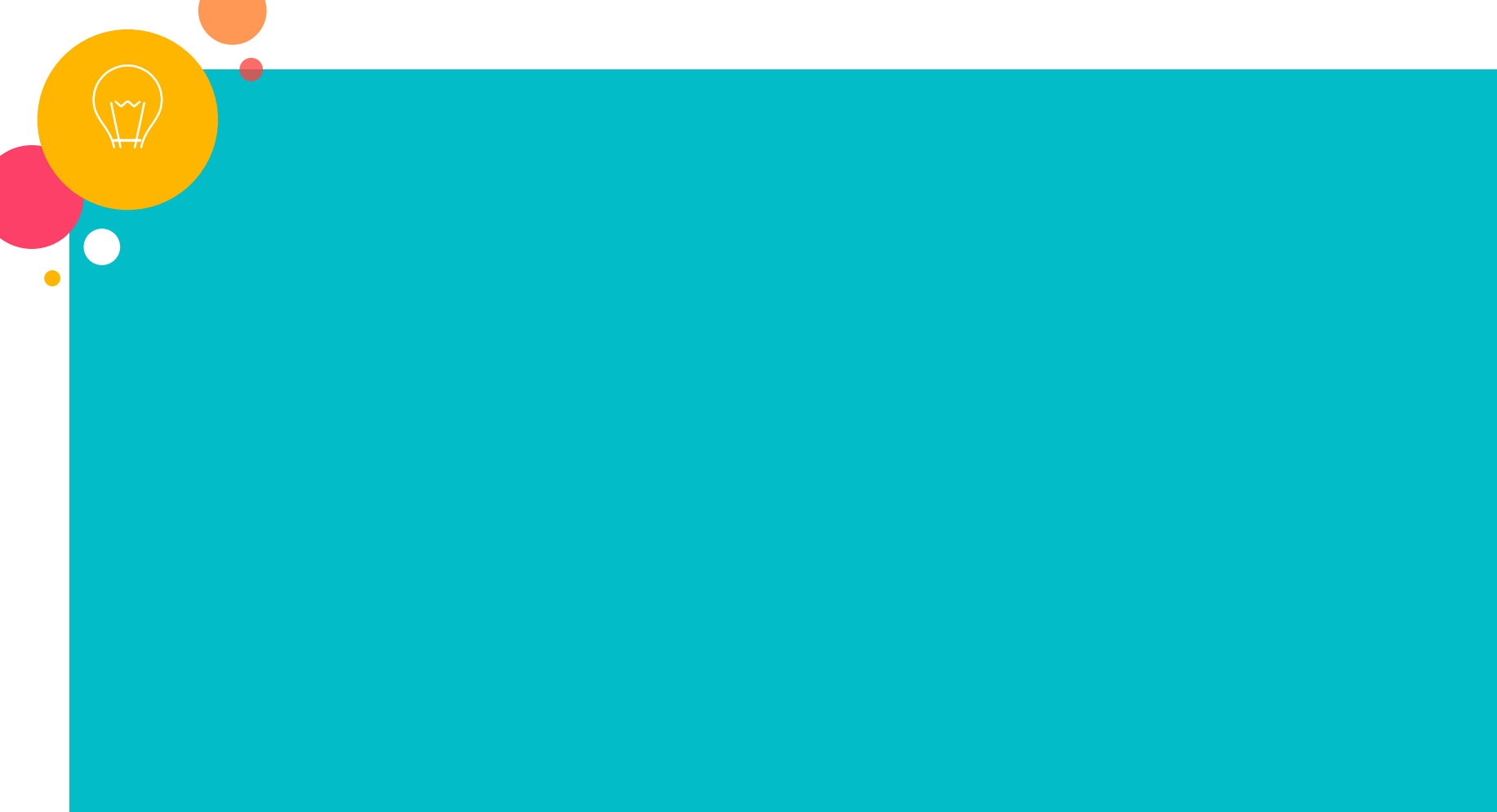
Growth Mindset

WHAT IS GROWTH MINDSET?

A mindset is an established way of thinking. It is a set of beliefs or a certain way of thinking that will determine your behavior, outlook on life, and attitude toward the events, circumstances, and people around you.









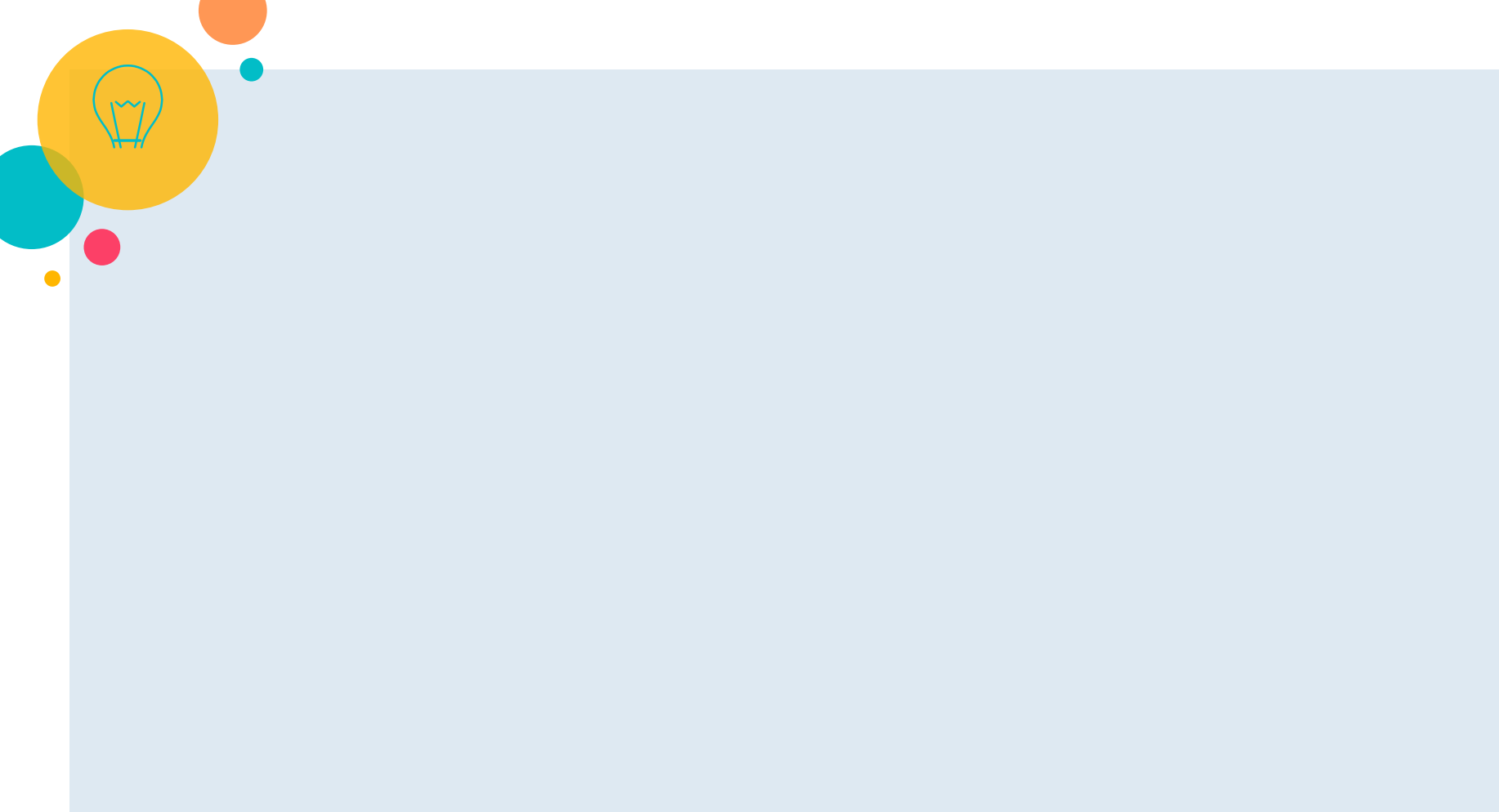


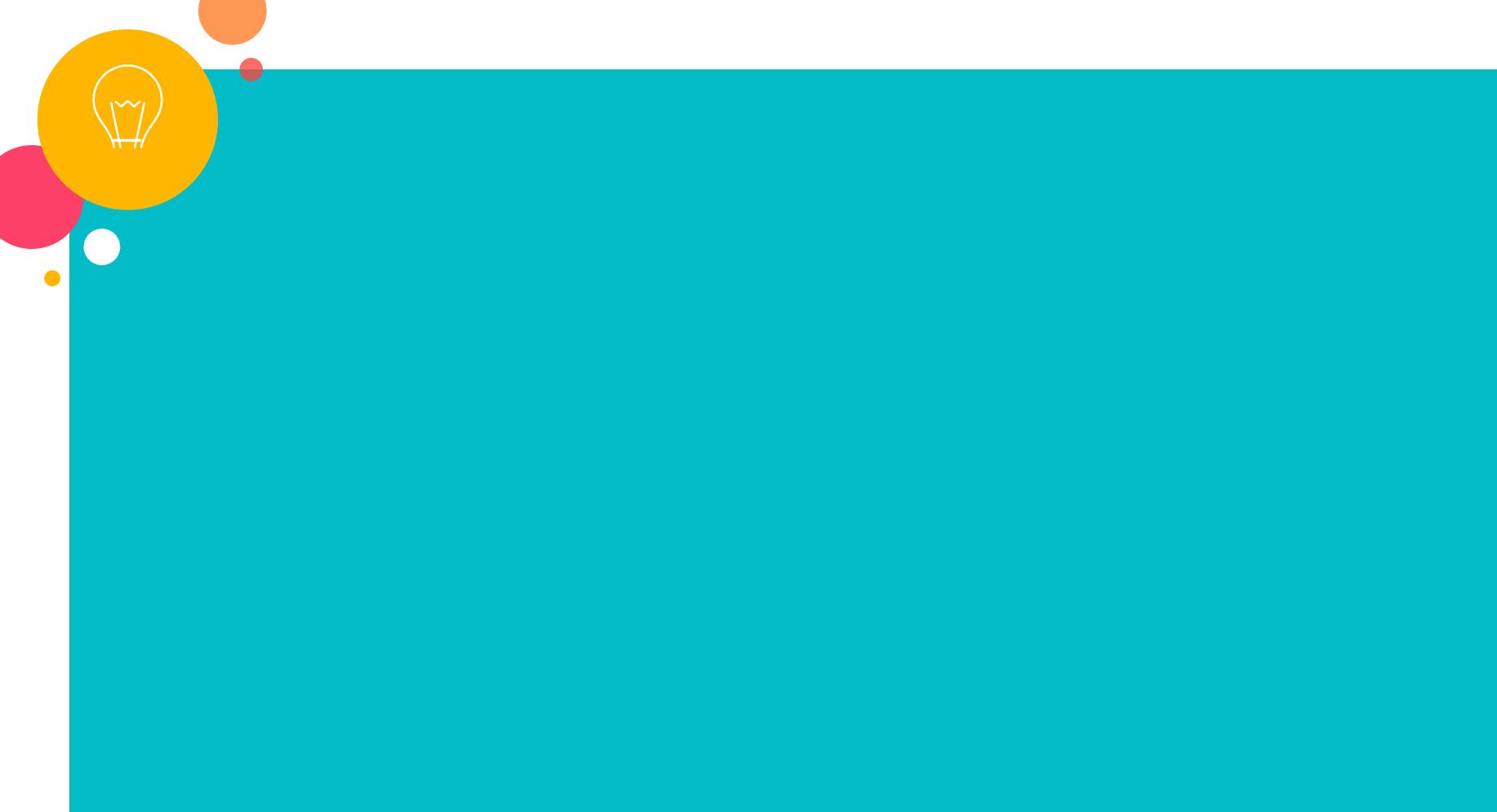
Assessment for Learning

WHAT IS ASSESSMENT FOR LEARNING?

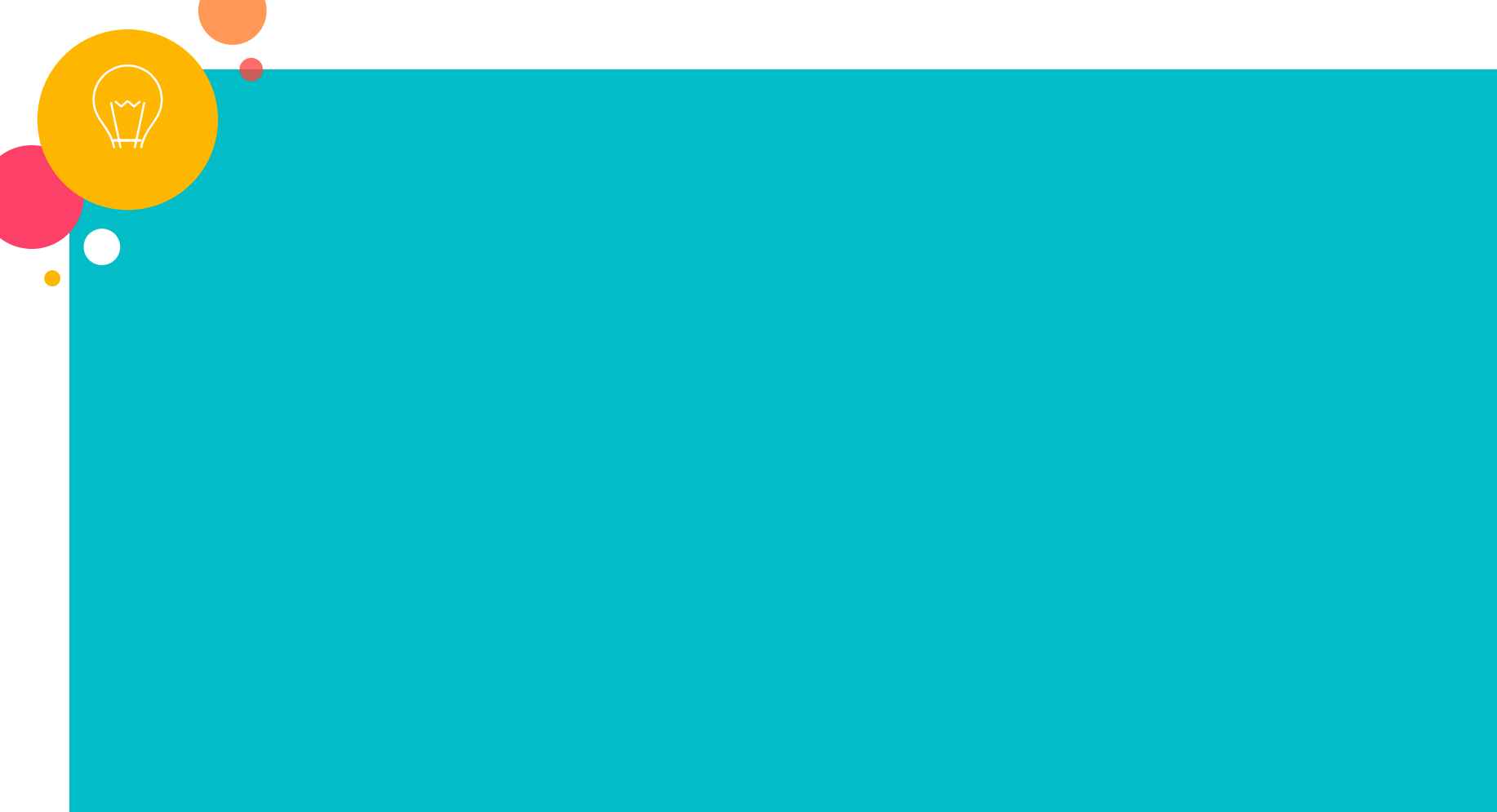
Assessment for Learning is a process used by teachers and students. This process involves establishing clear learning goals, or standards, and assessing student mastery of those standards. The information gathered via assessment is used to provide students targeted feedback and develop instructional plans aimed at student growth.



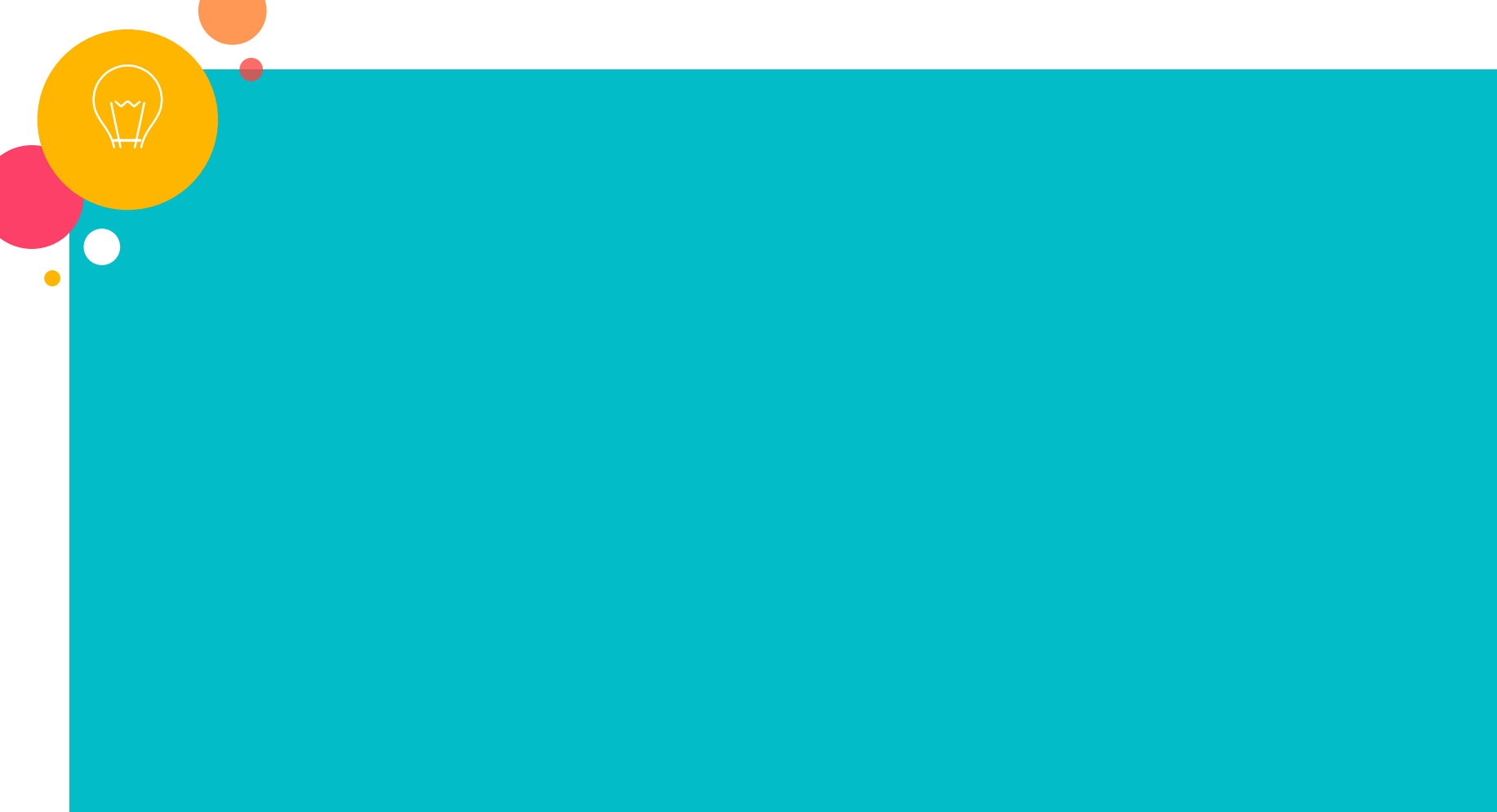


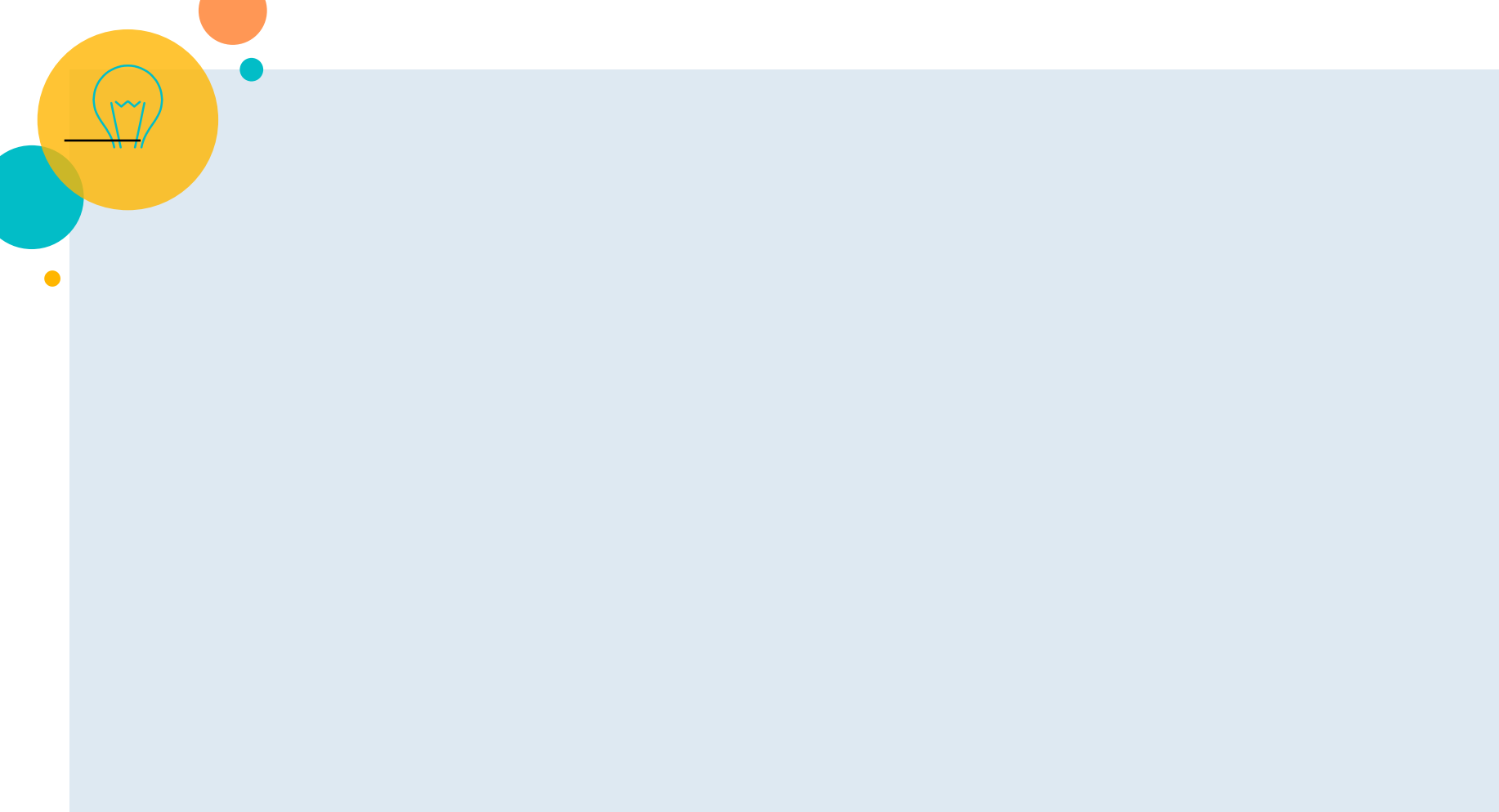














<i>English Language Arts</i> <i>Learning Standards</i>	<i>Teacher:</i>		
	T1	T2	T3
Asks/answers questions to show understanding; cites fiction text		ME	ME
Retells stories/folktales/myths including key details and theme/lesson		AP	ME
Describes characters and how actions contribute to events in story		ME	
Determines meaning of words/phrases/figurative language	DM	AP	ME
Distinguishes own point of view from that of the narrator/characters	AP	ME	
Explains how illustrations help what is conveyed by words in a story	ME		
Compares/contrasts stories written by author about similar characters			ME
Asks/answers questions to show understanding; cites nonfiction text		ME	ME
Identifies main idea; explains how key details support main idea	AP	ME	ME
Uses text features/search tools to efficiently locate information		AP	
Uses illustrations and words in nonfiction text to show understanding		ME	ME
Describes logical connection between sentences and paragraphs in text	AP	AP	ME

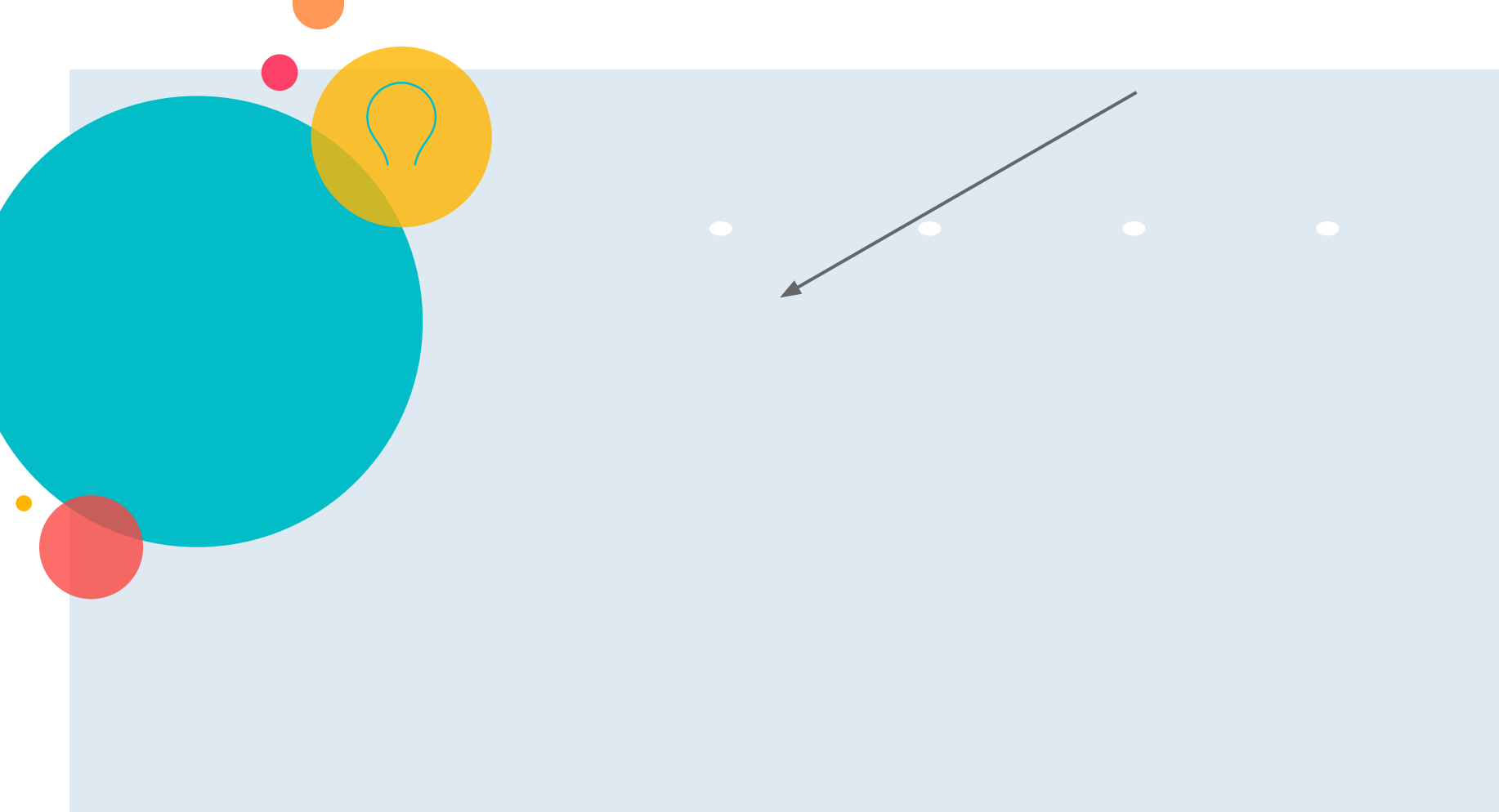












Skill	Extends Standards	Meets Standards	Approaching Standards	Does Not Meet Standards
Commitment to Learning	Always engaged in learning, on task, and participates positively.	Consistently engaged in learning, stays on task, and participates positively; may need prompts.	Inconsistently engaged in learning, has difficulty staying on task and/or struggles to participate positively.	Rarely engaged in learning, frequently off task, and/or rarely participates positively.
Activity Completion (class and/or homework)	Always completes class activities, homework, and/or assessments on-time; no missing or late assignments.	Consistently completes class activities, homework, and/or assessments on-time; completes missing assignments in a timely manner.	Inconsistently completes class activities, homework, and/or assessments on-time; frequently needs support to complete missing or late assignments.	Rarely completes class activities, homework, and/or assessments on-time; many missing or late assignments.
Preparedness (materials)	Always brings necessary materials to class.	Consistently brings necessary materials to class.	Inconsistently brings necessary materials to class.	Rarely brings necessary materials to class.
Peer Cooperation	Always participates and contributes positively in group tasks.	Consistently participates and contributes positively in group tasks. May need prompts.	Inconsistently participates and/or has difficulty working with a group.	Rarely participates in a group and/or disrupts others in group work.
Citizenship	Always follows teacher directions, CHAMPS expectations, and communicates respectfully with all.	Consistently follows teacher directions, CHAMPS expectations, and communicates respectfully. May need prompts.	Inconsistently follows teacher directions, CHAMPS expectations, and/or struggles to communicate respectfully; needs guidance.	Rarely follows teacher directions, CHAMPS expectations, and/or needs significant support to communicate respectfully.



